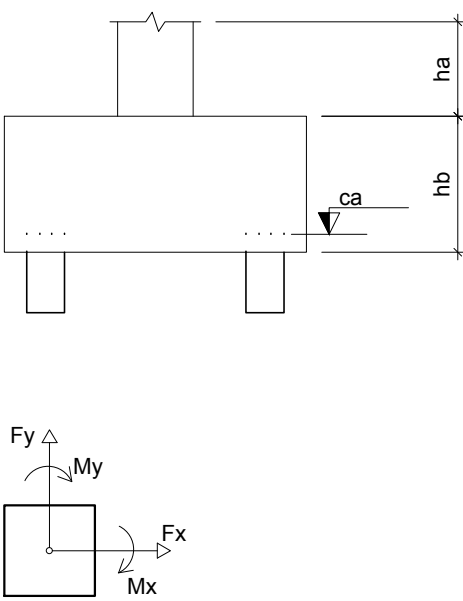


Pilar										Fundação					Bloco		
Nome	Seção (cm)	X (cm)	Y (cm)	Carga Máx. (tf)	Carga Mín. (tf)	Mx (kgf.m)	My (kgf.m)	Fx (tf)	Fy (tf)	Lado B (cm)	Lado H (cm)	h0 / ha (cm)	h1 / hb (cm)	ne	Estaca	ca (cm)	Base tub. (cm)
P1	20x30	624.00	1522.00	9.5	7.5	0	0	0.8	0.8	50	50	100	55	1	PRE20	-140	
P2	20x30	624.00	1522.00	12.0	10.3	0	0	0.8	0.5	50	50	100	55	1	PRE20	-140	
P3	20x30	1075.00	1522.00	8.1	6.5	0	0	0.6	0.4	50	50	100	55	1	PRE20	-140	
P4	19x30	1344.50	1522.00	6.9	4.3	0	0	0.5	0.4	50	50	100	55	1	PRE20	-140	
P5	19x19	1644.50	1527.50	5.9	4.2	0	0	0.3	0.2	50	50	100	55	1	PRE20	-140	
P6	19x19	841.00	1254.00	4.7	3.8	0	0	0.2	0.4	50	50	100	55	1	PRE20	-140	
P7	19x30	1203.50	1246.02	7.3	4.6	0	0	0.7	0.6	50	50	100	55	1	PRE20	-140	
P8	19x19	1344.50	1251.50	3.1	-0.1	0	0	0.4	0.5	50	50	100	55	1	PRE20	-140	
P9	19x35	15.00	1113.00	25.2	22.3	0	0	0.5	1.0	50	50	100	55	1	PRE20	-140	
P10	19x35	370.00	1113.00	29.8	26.9	0	0	0.9	0.2	110	50	100	65	2	PRE20	-150	
P11	19x35	616.00	1113.00	17.6	13.1	0	0	0.5	0.8	50	50	100	55	1	PRE20	-140	
P12	19x30	967.00	1080.00	6.2	4.4	0	0	0.3	0.5	50	50	100	55	1	PRE20	-140	
P13	19x19	1644.50	1017.85	7.8	6.9	0	0	0.1	0.3	50	50	100	55	1	PRE20	-140	
P14	22x35	9.50	801.00	40.3	37.3	0	0	0.7	0.9	110	50	100	60	2	PRE20	-145	
P15	22x35	370.00	801.00	56.0	53.7	0	0	1.0	0.2	152	132	100	85	3	PRE20	-170	
P16	19x35	624.00	801.00	26.6	23.2	0	0	0.5	0.5	110	50	100	55	2	PRE20	-140	
P17	19x40	967.00	813.50	7.7	6.7	0	0	0.5	0.8	50	50	100	55	1	PRE20	-140	
P18	19x30	1203.50	779.02	9.2	7.6	0	0	0.5	0.5	50	50	100	55	1	PRE20	-140	
P19	19x35	15.00	489.00	26.0	22.7	0	0	0.5	1.1	50	50	100	55	1	PRE20	-140	
P20	19x35	370.00	489.00	30.1	27.1	0	0	0.9	0.2	110	50	100	65	2	PRE20	-150	
P21	22x30	616.00	489.00	17.6	13.0	0	0	0.5	0.9	50	50	100	55	1	PRE20	-140	
P22	19x30	967.00	517.00	6.3	4.9	0	0	0.3	0.5	50	50	100	55	1	PRE20	-140	
P23	19x19	1644.50	519.15	7.8	6.9	0	0	0.1	0.3	50	50	100	55	1	PRE20	-140	
P24	19x19	841.00	329.00	5.8	4.8	0	0	0.3	0.3	50	50	100	55	1	PRE20	-140	
P25	19x30	1203.50	337.00	7.7	4.3	0	0	0.7	0.6	50	50	100	55	1	PRE20	-140	
P26	19x19	1344.50	331.50	3.9	0.0	0	0	0.5	0.5	50	50	100	55	1	PRE20	-140	
P27	19x30	15.00	9.50	9.9	8.2	0	0	0.8	0.9	50	50	100	55	1	PRE20	-140	
P28	19x30	624.00	15.00	12.5	11.0	0	0	0.6	0.7	50	50	100	55	1	PRE20	-140	
P29	19x30	1075.00	15.00	8.5	6.9	0	0	0.6	0.5	50	50	100	55	1	PRE20	-140	
P30	19x30	1344.50	15.00	7.1	5.0	0	0	0.5	0.5	50	50	100	55	1	PRE20	-140	
P31	19x19	1644.50	9.50	5.9	4.2	0	0	0.3	0.2	50	50	100	55	1	PRE20	-140	

Estacas					Quantidade
Simbologia	Nome	d (cm)	b (cm)	Profundidade (m)	
	PRE20	20.00	20.00	10	37 unid. 370 m

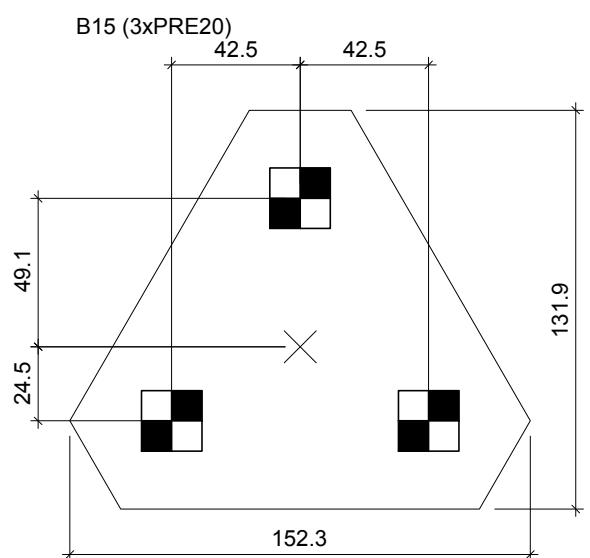
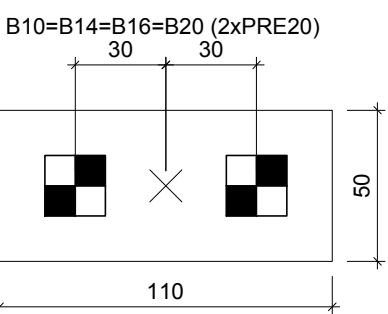
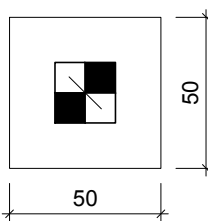


LOCAÇÃO DAS ESTACAS									
Bloco	Nome	Tipo	Coordenada X (cm)	Coordenada Y (cm)	Carga máx. tf	Carga mín. tf	Momento kgf.m	Força horiz. tf	CA (cm)
B1	E1-1	PRE20	15.00	1527.50	9.82	7.93	318.80	1.03	-140
B2	E2-1	PRE20	624.00	1522.00	12.25	10.79	263.21	0.85	-140
B3	E3-1	PRE20	1075.00	1522.00	8.39	6.96	194.01	0.63	-140
B4	E4-1	PRE20	1344.50	1522.00	7.15	4.74	149.41	0.48	-140
B5	E5-1	PRE20	1644.50	1527.50	6.20	4.57	91.64	0.27	-140
B6	E6-1	PRE20	841.00	1254.00	4.94	4.15	109.65	0.32	-140
B7	E7-1	PRE20	1203.50	1246.02	7.61	5.00	221.54	0.71	-140
B8	E8-1	PRE20	1344.50	1251.50	3.36	0.25	154.73	0.45	-140
B9	E9-1	PRE20	15.00	1113.00	25.44	22.72	303.99	1.03	-140
B10	E10-1	PRE20	370.00	1143.00	15.27	13.89	164.55	0.42	-150
	E10-2		370.00	1083.00	15.36	13.99	164.55	0.42	
B11	E11-1	PRE20	616.00	1113.00	17.88	13.50	227.49	0.77	-140
B12	E12-1	PRE20	967.00	1080.00	6.45	4.86	154.50	0.50	-140
B13	E13-1	PRE20	1644.50	1017.85	8.11	7.31	81.74	0.24	-140
B14	E14-1	PRE20	-20.50	801.00	20.87	19.36	140.29	0.48	-145
	E14-2		39.50	801.00	20.18	18.92	140.29	0.48	
B15	E15-1	PRE20	394.54	843.50	19.76	19.27	0.00	0.32	-170
	E15-2		320.93	801.00	19.40	18.12	0.00	0.32	
	E15-3		394.54	758.50	19.76	19.27	0.00	0.32	
B16	E16-1	PRE20	594.00	801.00	13.44	12.23	62.80	0.23	-140
	E16-2		654.00	801.00	13.79	11.79	62.80	0.23	
B17	E17-1	PRE20	967.00	813.50	7.93	7.19	214.76	0.77	-140
B18	E18-1	PRE20	1203.50	779.02	9.44	8.02	209.62	0.68	-140
B19	E19-1	PRE20	15.00	489.00	26.31	23.15	335.94	1.14	-140
B20	E20-1	PRE20	370.00	519.00	15.48	14.09	162.93	0.41	-150
	E20-2		370.00	489.00	15.39	14.00	162.93	0.41	
B21	E21-1	PRE20	616.00	489.00	17.84	13.42	255.57	0.82	-140
B22	E22-1	PRE20	967.00	517.00	6.58	5.34	143.86	0.46	-140
B23	E23-1	PRE20	1644.50	519.15	8.06	7.27	79.44	0.23	-140
B24	E24-1	PRE20	841.00	329.00	6.03	5.20	88.49	0.26	-140
B25	E25-1	PRE20	1203.50	337.00	7.96	4.70	209.62	0.68	-140
B26	E26-1	PRE20	1344.50	331.50	4.16	0.29	154.66	0.45	-140
B27	E27-1	PRE20	15.00	9.50	10.17	8.62	342.03	1.10	-140
B28	E28-1	PRE20	624.00	15.00	12.62	11.42	271.23	0.87	-140
B29	E29-1	PRE20	1075.00	15.00	8.79	7.36	189.19	0.61	-140
B30	E30-1	PRE20	1344.50	15.00	7.40	5.42	155.86	0.50	-140
B31	E31-1	PRE20	1644.50	9.50	6.16	4.54	93.77	0.27	-140

Planta de locação das estacas

escala 1:50

B1=B2=B3=B4=B5
B6=B7=B8=B9=B11
B12=B13=B17=B18
B19=B21=B22=B23
B24=B25=B26=B27
B28=B29=B30=B31 (1xPRE20)



Legenda dos blocos

escala 1:25

Locação no eixo X	
Coordenadas (cm)	Nome
9.50	P14
15.00	P1, P6, P18, P27
370.00	P10, P15, P20
616.00	P11, P21
624.00	P2, P16, P28
841.00	P6, P24
1113.00	P9, P10, P11
967.00	P12, P17, P22
1075.00	P3, P29
1203.50	P7, P18, P25
1344.50	P4, P8, P26, P30
1644.50	P5, P13, P23, P31

Locação no eixo Y	
Coordenadas (cm)	Nome
1527.50	P1, P5
1522.00	P2, P3, P4
1254.00	P6
1251.50	P8
1246.02	P7
1113.00	P9, P10, P11
1080.00	P12
1017.85	P13
813.50	P17
801.00	P14, P15, P16
779.02	P18
519.15	P23
517.00	P22
489.00	P19, P20, P21
337.00	P25
331.50	P26
329.00	P24
15.00	P28, P29, P30
9.50	P27, P31



PRÓ-REITORIA DE ADMINISTRAÇÃO
COORDENAÇÃO DE ENGENHARIA E ARQUITETURA
Rua Esmeralda, 430 - Faixa Nova - Camobi - CEP 97110-767 - Santa Maria - Rio Grande do Sul.
Telefone: (55) 3226-6630

OBRA: SALAS DE AULA E SANITÁRIOS/VESTIÁRIOS

LOCAL: IF FARROUPILHA - CAMPUS SANTO ÂNGELO

PROJETO: ESTRUTURAL PRÉDIO SANITÁRIOS

ÁREA: 662,73 m²

CONTEÚDO: PLANTA DE LOCAÇÃO ESTACAS

ESCALA: 1/50

PROPRIETÁRIO:
INSTITUTO FEDERAL FARROUPILHA

DATA: Março/2017

RESPONSÁVEL:
ENG. CIVIL CRISTINA SILVA FELTRIN

DESENHO: Cristina

PRANCHA: 01/05